

Electronic Service Control Version 8

MS SQL Server Installation Guide

Upgrade Directions

Before You Begin

These directions are intended to help you install MS SQL Server for the first time. If you are told to upgrade SQL Server, please contact Coastal Computer Corporation at 800-226-7529 for complete directions.

If you already have MS SQL Server installed on your computer, please flip ahead to page 4 for complete configuration instructions.

Minimum System Requirements

Before you begin the installation you need to collect a bit of information. The first thing to look at is the minimum system requirements. Please make sure the computer you select to be your server meets these minimum requirements before continuing.

Server Requirements

Processor:	Pentium IV 1.2Ghz
Memory:	512MB RAM [1GB Recommended]
Free Hard Drive Space:	5GB
Other Drives:	CD-ROM or DVD-ROM
Networking:	Must be networked using TCP/IP
Operating System:	Windows 2000, XP or Server 2003
Required Software:	Internet Explorer 6.0 or later, current Virus Protection software



Note: We recommend that all Windows Critical Updates and Service Packs be applied before installing MS SQL Server on the computer.

Downloading the Program

The last step you need to perform before installing MS SQL Server is to download it. This can be achieved by completing the following steps.

1. Open your Internet Browser and go to the following site:
<http://www.coastalcomputercorporation.com/html/updates80.html>
2. When prompted for a password, enter the word **power** in all lowercase letters.
3. Click the **Download** button on the **MS SQL Server Desktop Edition with SP4** line.



4. Click **Save** to copy the program to your computer.
5. Note the name of the file and the location where it will be saved in the spaces provided below before clicking **Save** again.

File Name _____
Location _____

Install MS SQL Server

Once you have download the server you are ready to install it.

1. Exit all programs on the computer.
2. Locate and double-click the file you wrote down above.
3. The installation should be largely automated. If prompted for any information during the installation, simply accept all the defaults.

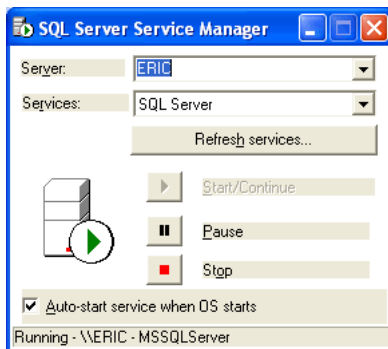
Configure MS SQL Server

Now that SQL Server is installed it needs to be configured before use.

1. Double-click the SQL Server Service Manager icon in the Windows System Tray.



2. In the resulting window, click in the **Services** dropdown, select the **SQL Server** (not SQL Server Agent) option, and verify that the service is started (the Start/Continue button is greyed out, and there is a green arrow on the computer image to the left). Make sure that the **Auto-Start** option is checked as well.



3. Click the **Services** dropdown and select the **Distributed Transaction Coordinator** (or MSDTC) option. Use the same settings described in the previous step.
4. Close the SQL Service Manager by clicking the **X** in the upper right corner.

At this point SQL Server should be ready to use.

Using ESC with Microsoft SQL Server (Full Version)



VERY IMPORTANT! Only perform the following steps if you will be using the full version of Microsoft SQL Server (not the version we are providing on our web site). If you are unsure if you are using full SQL, consult your IT person or a qualified computer technician.

In order to use ESC with your existing installation of Microsoft SQL Server, you will follow the client installation instructions above on all machines that will be using the ESC software. The following steps must be done in the Enterprise Manager of SQL before a database can be created, however.

1. In the Enterprise Manager, right-click on the specific server (not the group) and select Properties. In the Properties box, click on the Security tab and click on Windows NT and SQL authentication (not Windows only). After making this change, you must restart SQL or reboot the computer.
2. In the Enterprise Manager, locate the server under the group and click the plus sign to expand the tree under it. Locate the Logins option under the Security folder and open it. Find the SA user and modify the Security Administrator password so that it is now ESC.
3. Create the database using the steps found above in Database Creation.
4. Create user login names and passwords for all users that will be using the workstations in ESC, under the Setup Users area found under the Edit dropdown.
5. In the Enterprise Manager, set up the same names and passwords just created in ESC under the database you created. Give all of these users DBO access to the database.
6. Change the SA account in SQL to whatever you would like it to be.

We do not support the installation or modification of the Microsoft SQL Server program. If you have any problems with the implementation of these instructions, we recommend consulting with a qualified computer technician.