

Electronic Service Control
Version 8
Single User Patch Guide

To Patch or Not To Patch

Patches are designed to update your existing copy of ESC to the latest revision available for the version you have installed. They cannot be used to upgrade ESC from one version to another.

8.00.02
↑ ↑ ↑
Version Major Minor
 Revision Revision

For example: A patch could be used to upgrade your ESC installation from version 8.00.01 to 8.00.02 because only the revision number is changing. You could not patch from version 7.00.31 to 8.00.02 because the version number would change.

To determine your current patch level, open ESC and note the patch number shown on the opening screen. Write the patch level down in the field provided below.



Patch _____

Check Patch Level

Complete the following steps to see if a more recent revision is available.

1. Open your Internet Browser and go to the following site:
<http://www.coastalcomputercorporation.com/html/updates80.html>
2. When prompted for a password, enter the word **power** in all lowercase letters.
3. Check the version shown on the **ESC - Single User Patch** line. If it is higher than your existing version, click the **Download** button on the same line. If the version is the same or lower than the one currently installed on your computer, there is no need to upgrade. If you are not running ESC Version 8, please download and read the directions on the **ESC - Single User** line instead.



Check Patch Level *(Continued)*

4. Click **Save** to copy the program to your computer.
5. Note the name of the file and the location where it will be saved in the spaces provided below before clicking **Save** again.

File Name _____

Location _____

Making a Backup

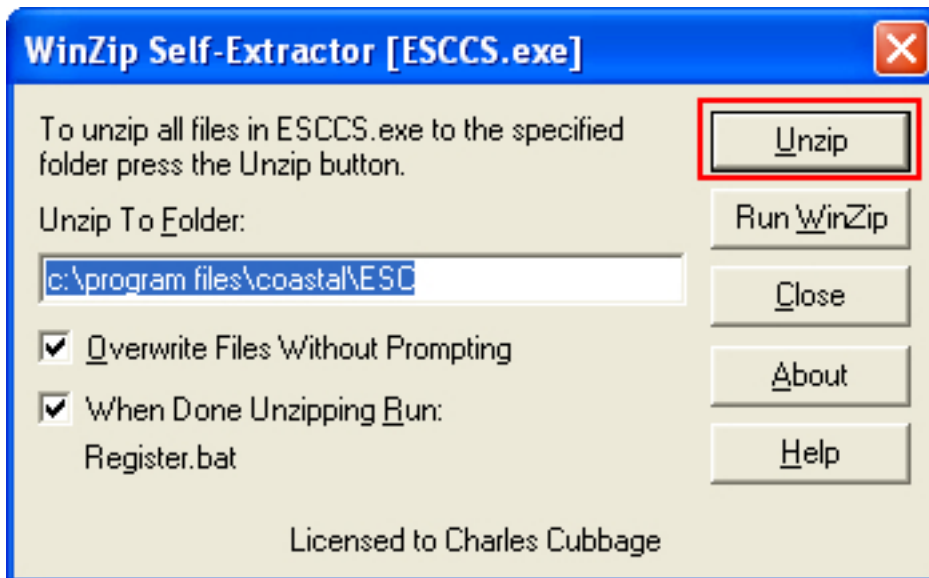
Before installing the upgrade, you need to make a backup of your existing data. This can be accomplished by performing the following steps from within ESC.

1. Click **File | Backup Your Data**.
2. Note the file name and location of the data on the following screen.
3. When the backup is complete and click **OK**. Copy the file shown in the previous step onto a different computer or back it up to a tape/USB drive/zip disk/CD/DVD/etc. Keep that copy for at least 1 month.

Installing the Patch

Once the backup is complete you are ready to install the patch.

1. Exit all programs on the computer (including ESC).
2. Locate and double-click the file you wrote down above.
3. Click the Unzip button to decompress the patched files and put them in their proper location. If you installed ESC to a different directory, enter that directory in the appropriate field first.



4. Click OK once the files have been decompressed. This will cause a quick batch file that will complete the patch process to run.

Upgrading the Database

After installing the latest patch, the previous database may need to be converted. To do this simply open ESC normally. If the data needs to be converted it will be. This process should not take more than 10 minutes on most computers.